

Non-Local Haze Propagation with an Iso-Depth Prior

Supplemental Material

Incheol Kim

Min H. Kim

Korea Advanced Institute of Science and Technology (KAIST)

Comparison

Effect of Combining NNFs with Other Methods

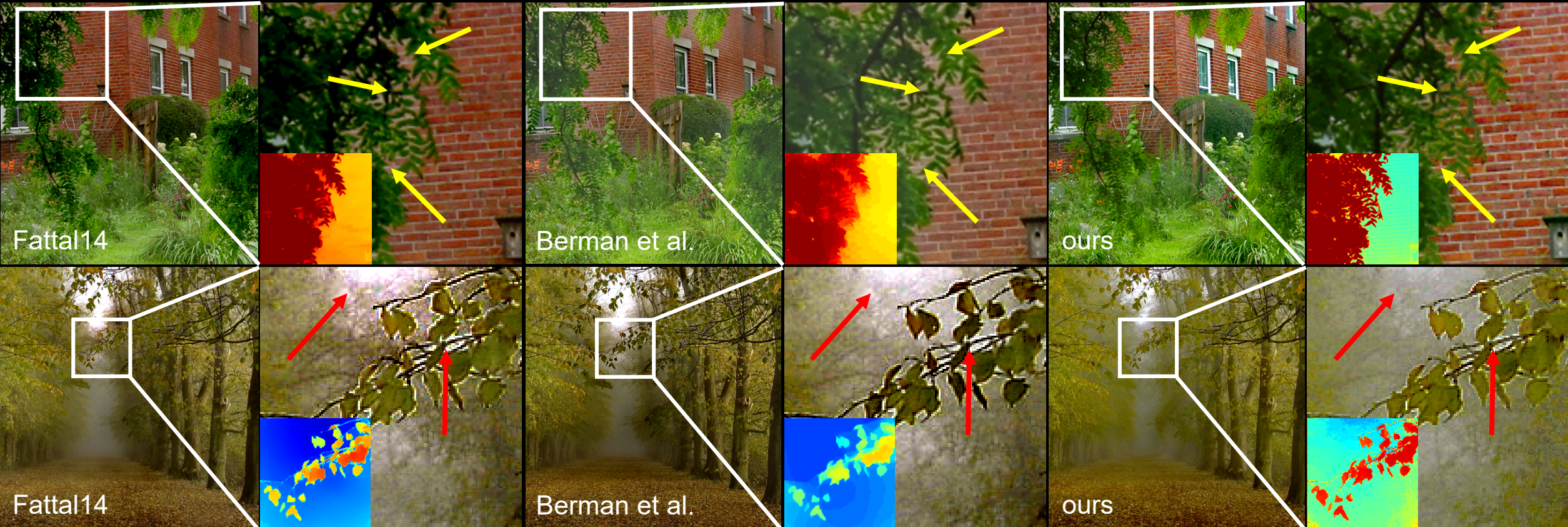


Figure 7 in the paper

Internal Comparison

Effect of Combining NNFs



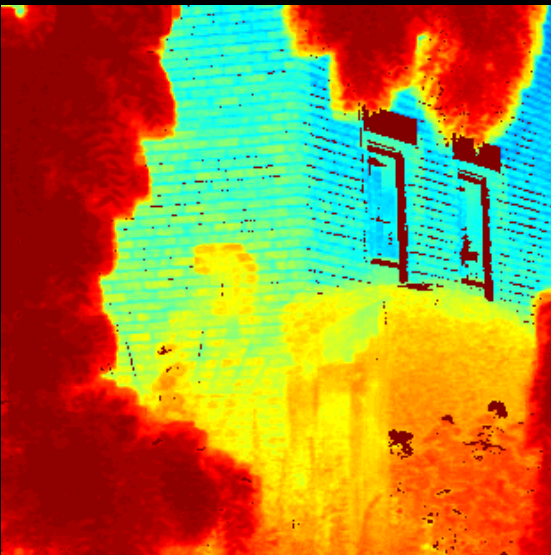
input



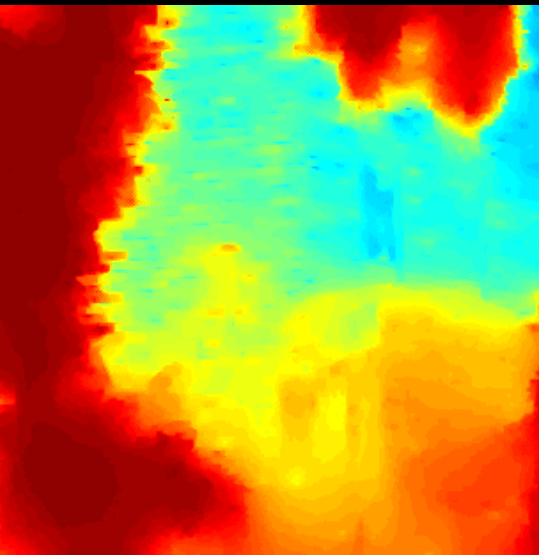
Without NNFs



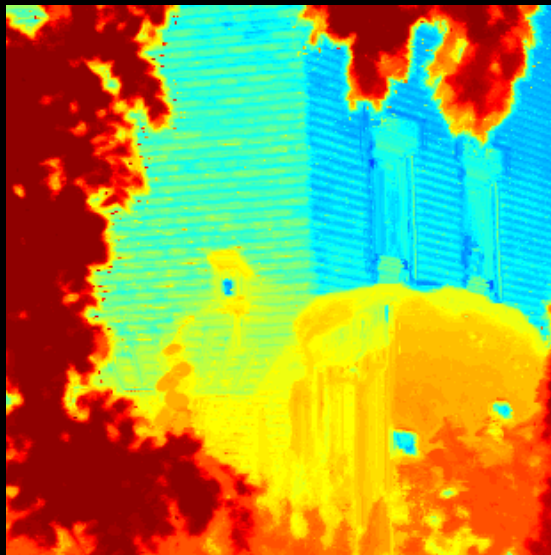
With NNFs



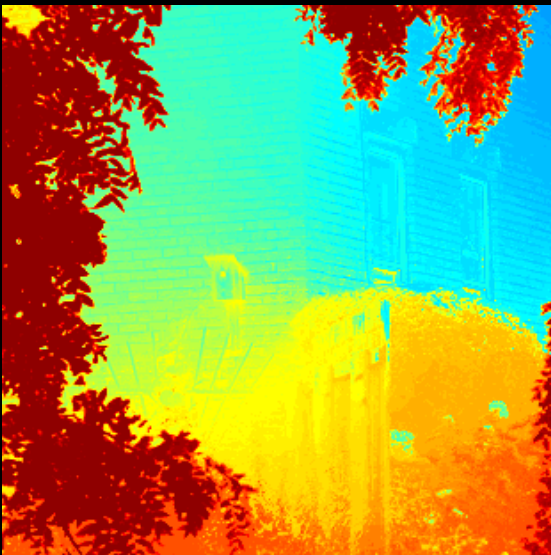
Initial estimates



Without NNFs



With NNFs



With NNFs and WMF

Comparison

Regularization

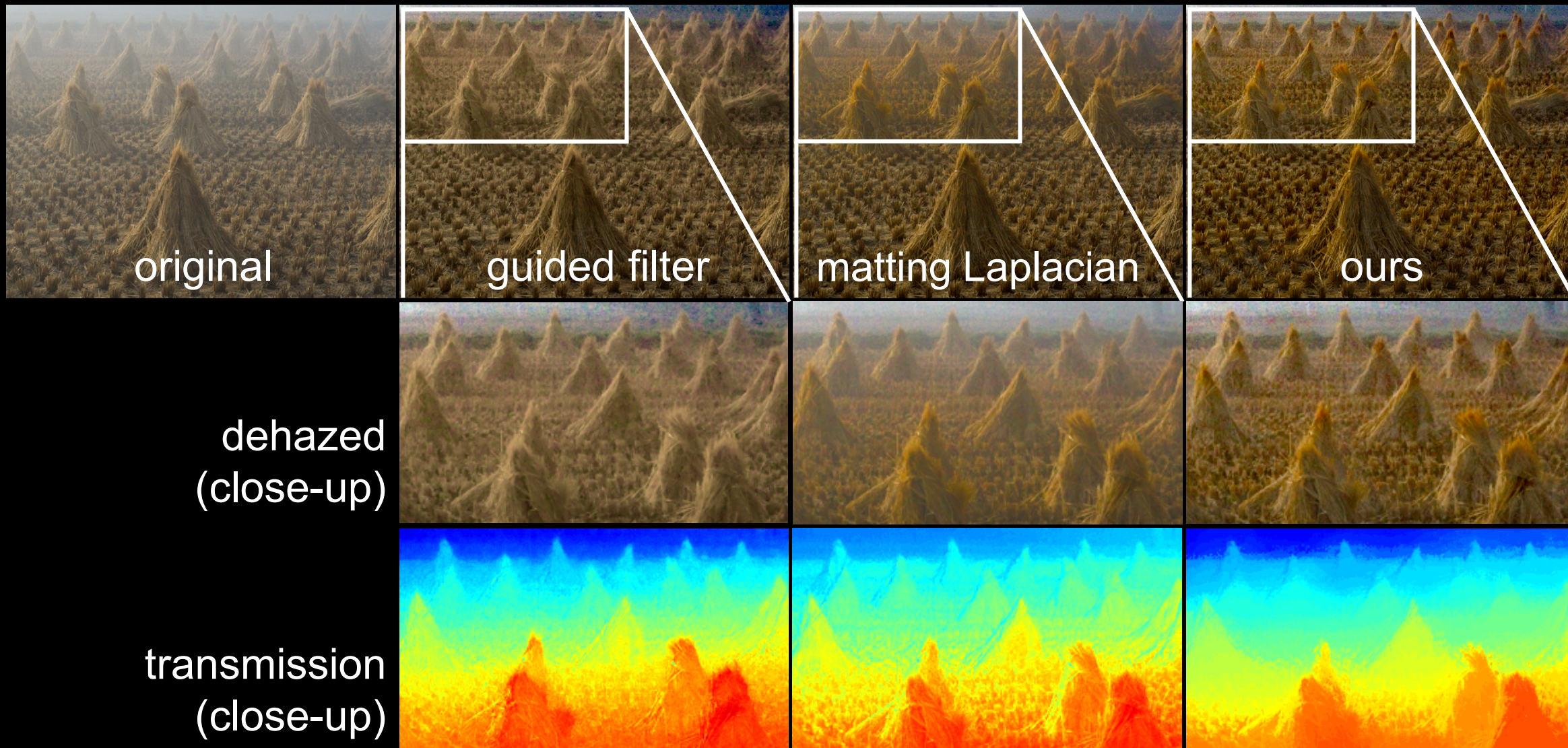


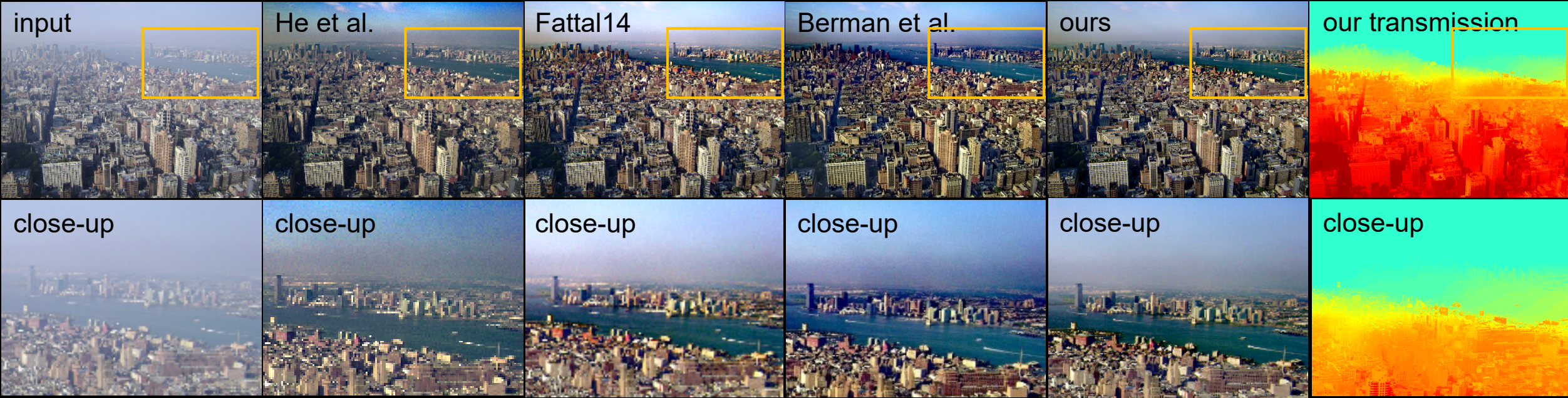
Figure 9 in the paper

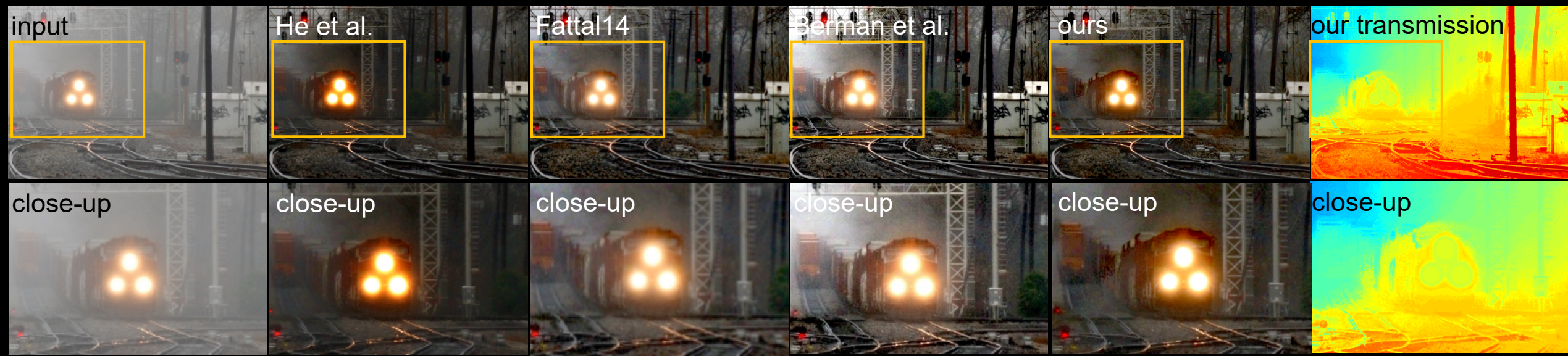
Qualitative Comparison

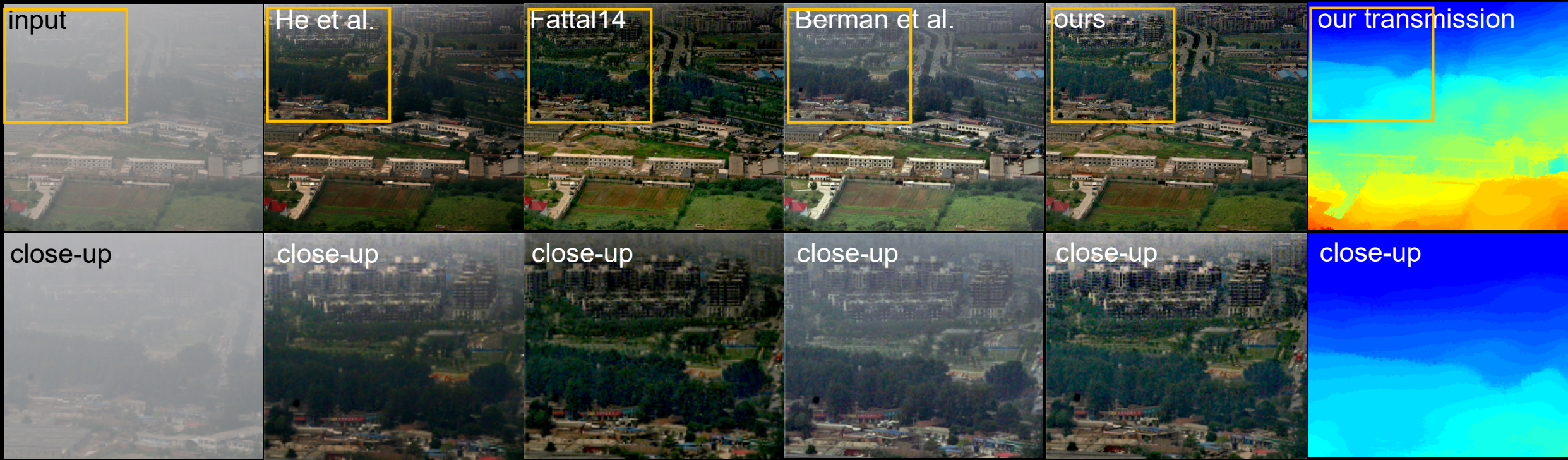
Single Image Dehazing

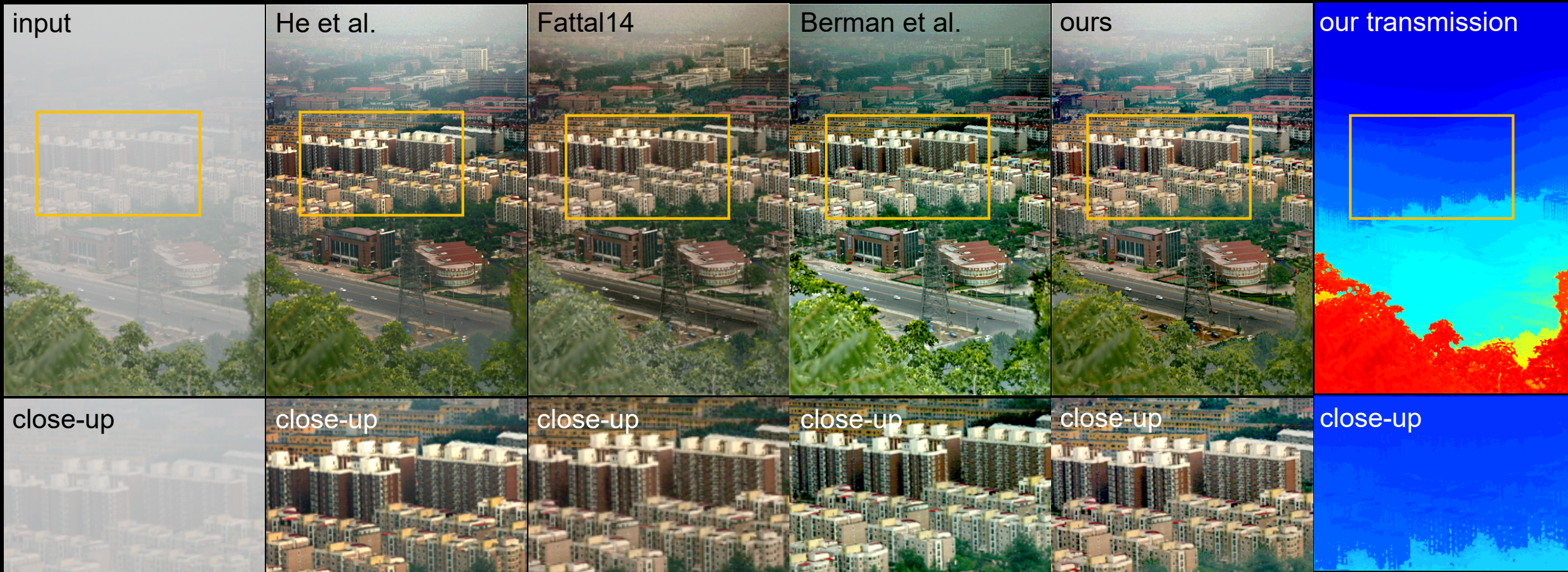


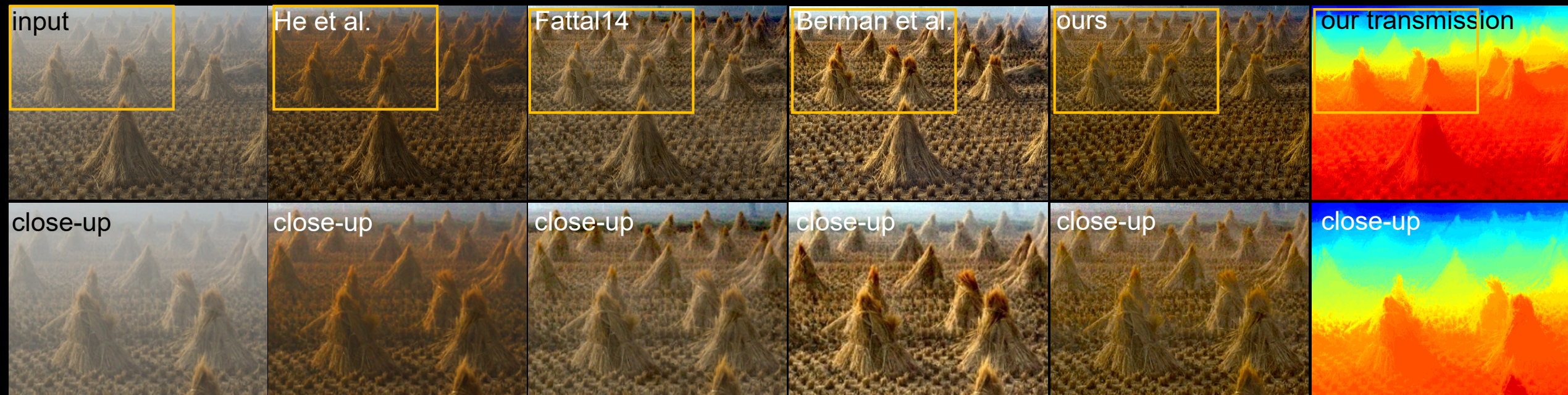




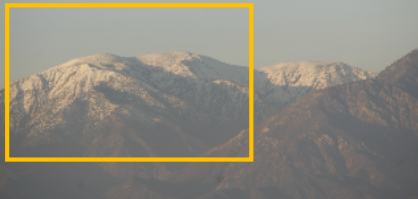




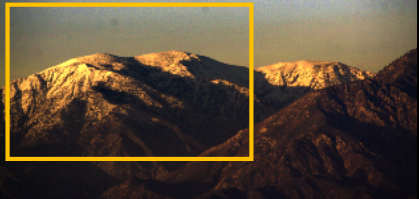




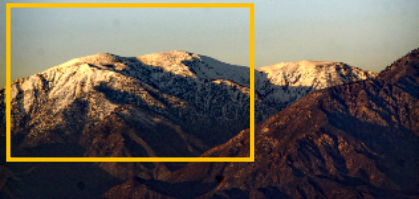
input



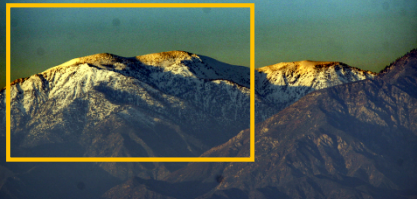
He et al.



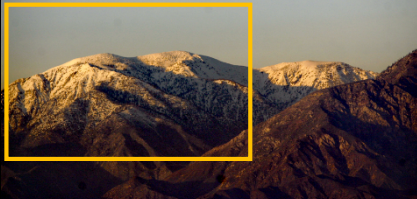
Fattal14



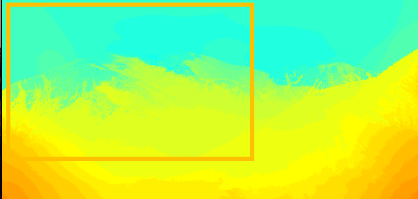
Berman et al.



ours



our transmission



close-up



close-up



close-up



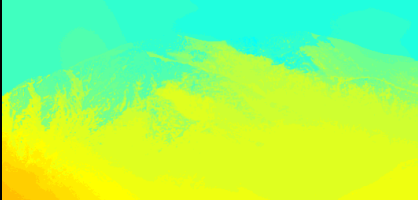
close-up

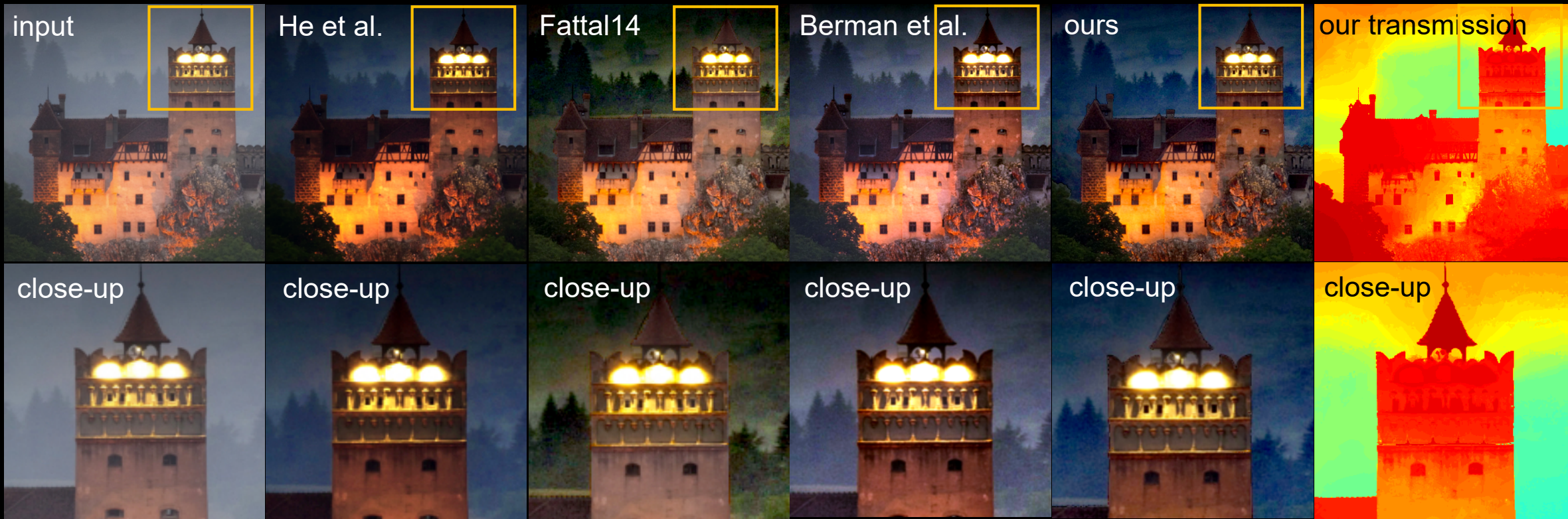


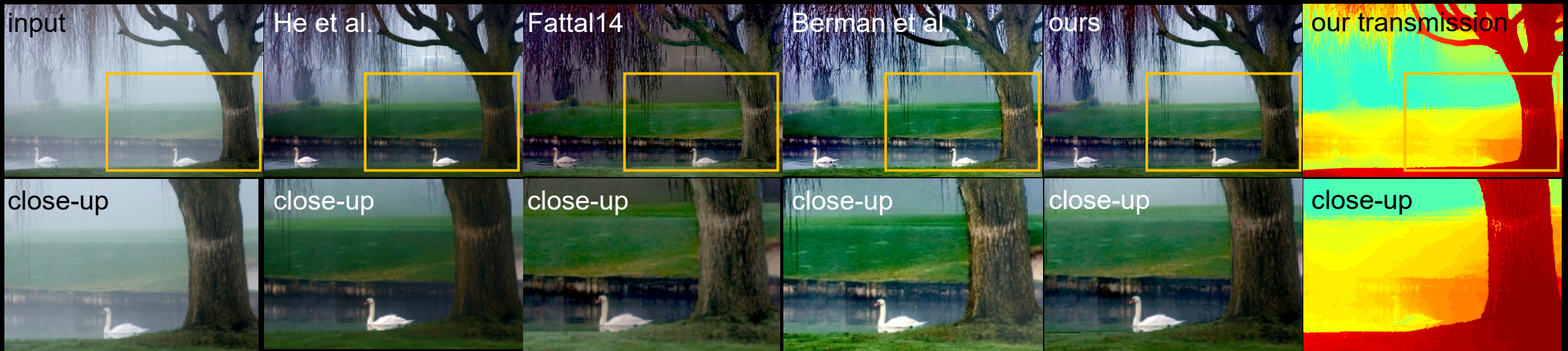
close-up

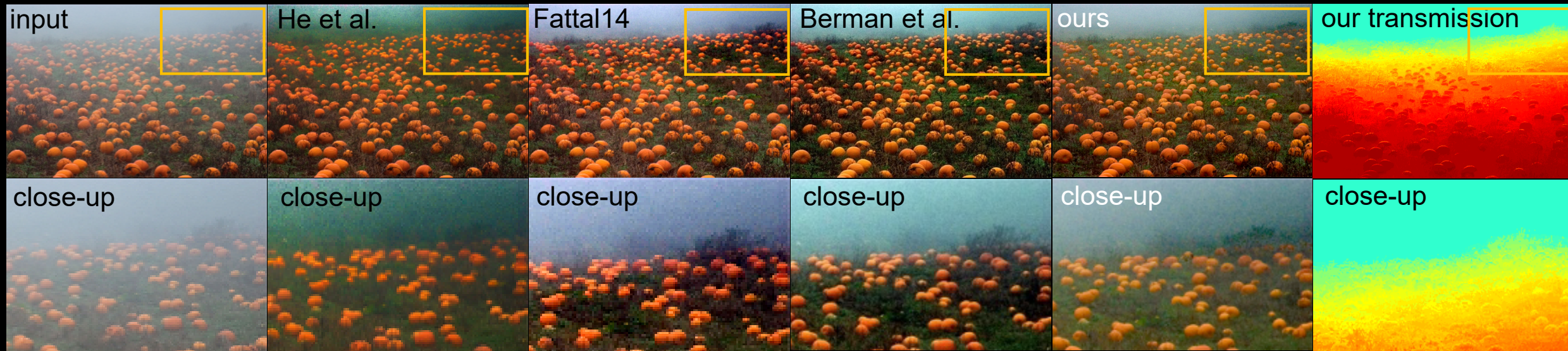


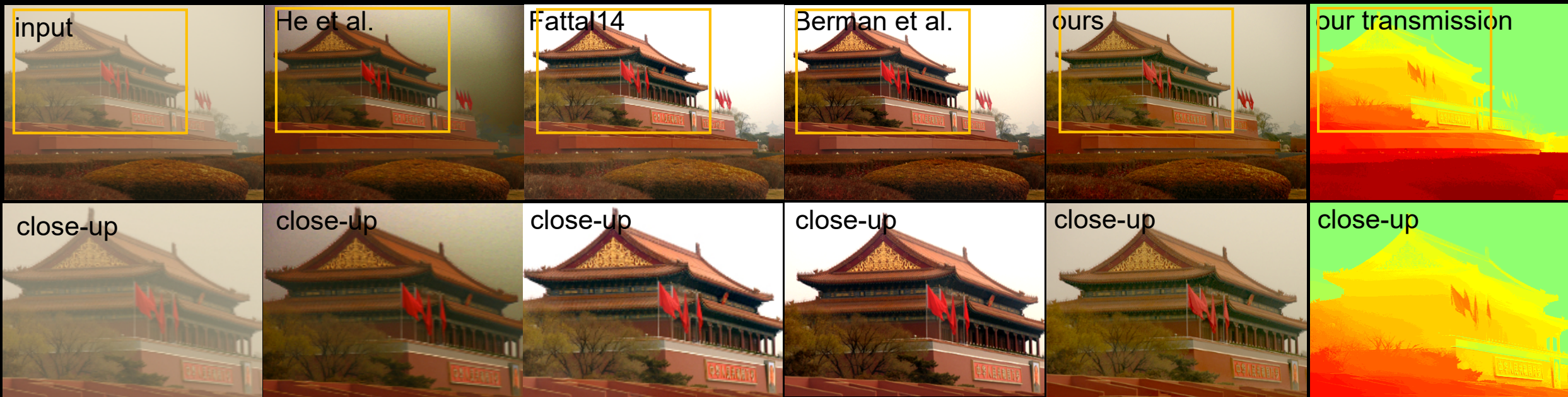
close-up

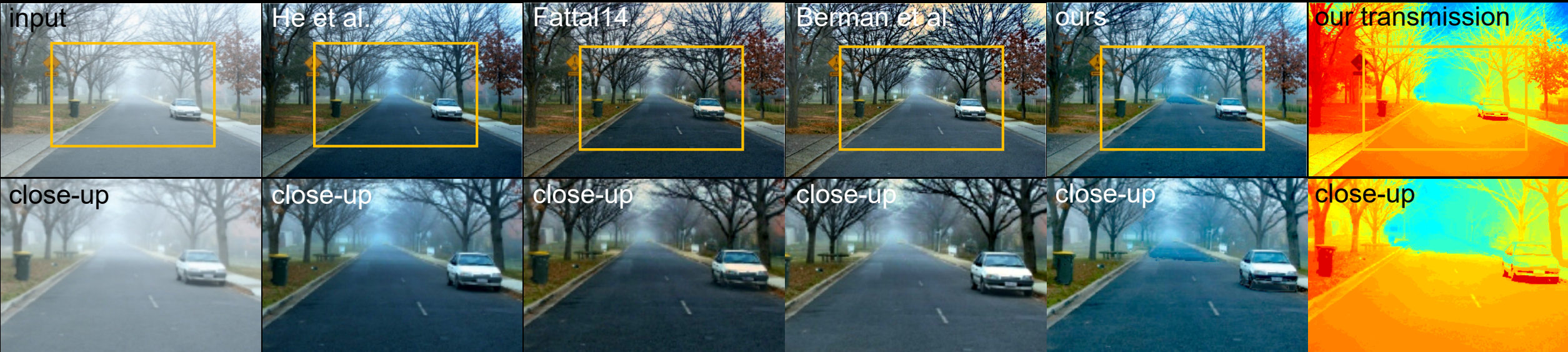


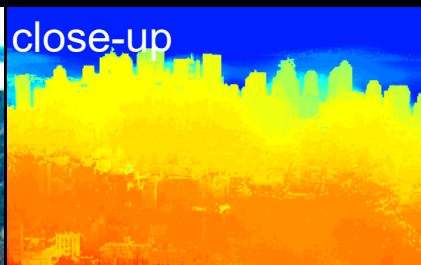
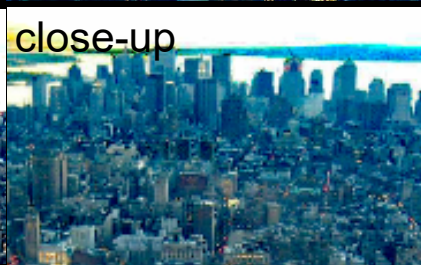
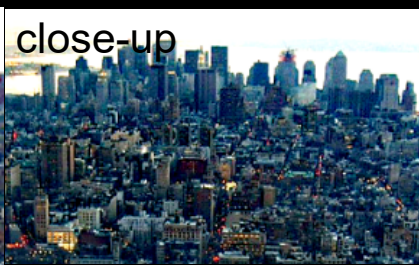
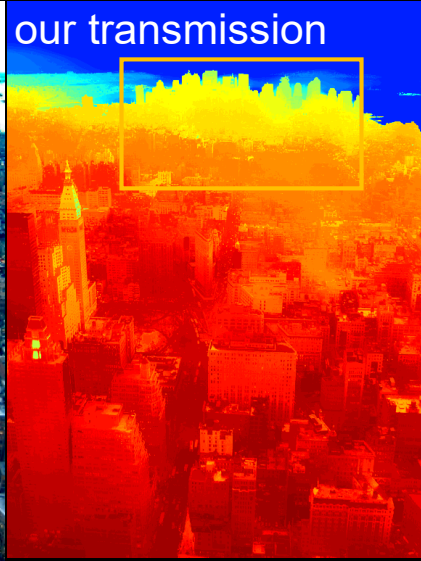


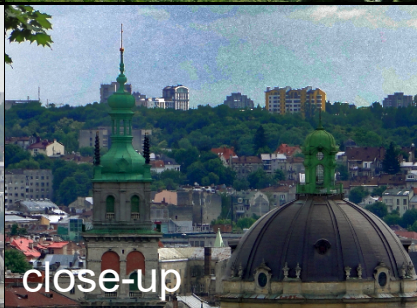
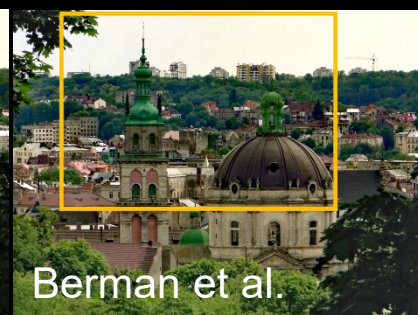
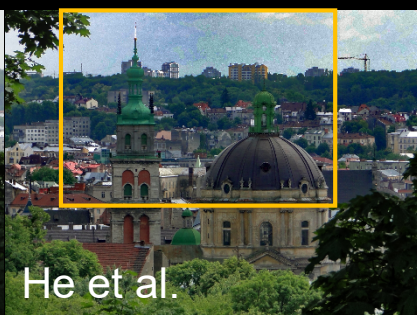
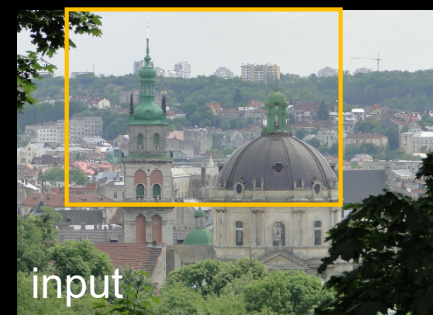


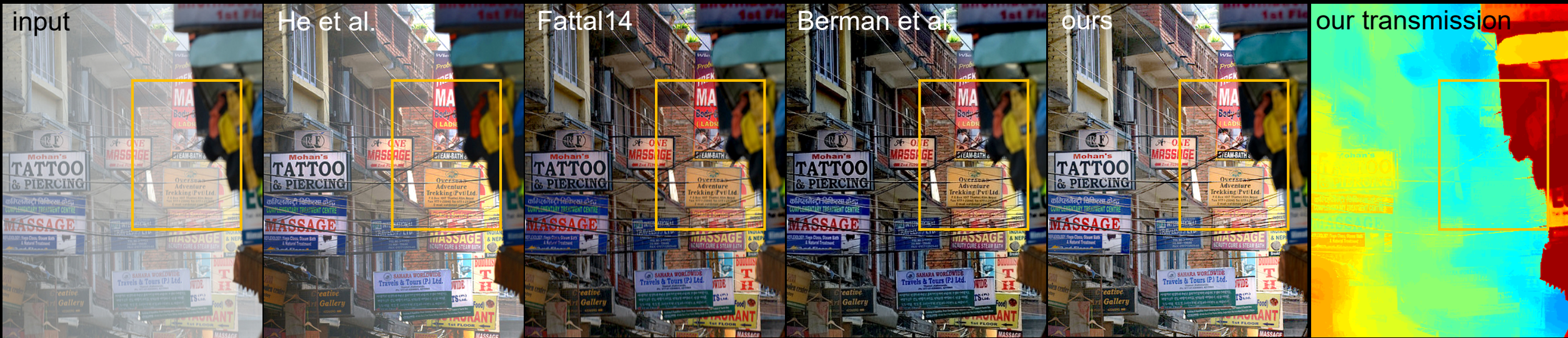


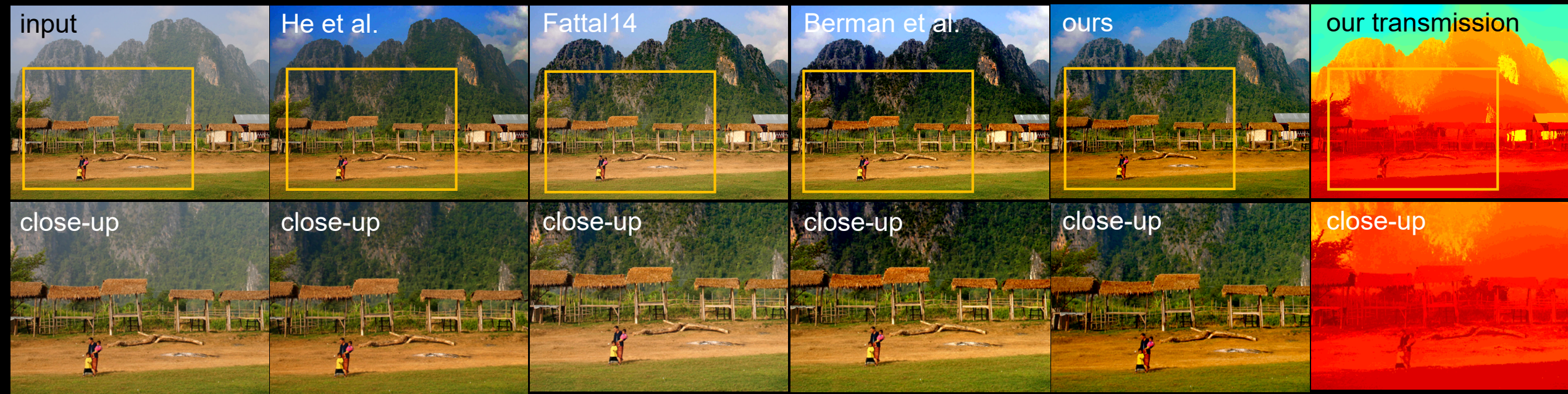








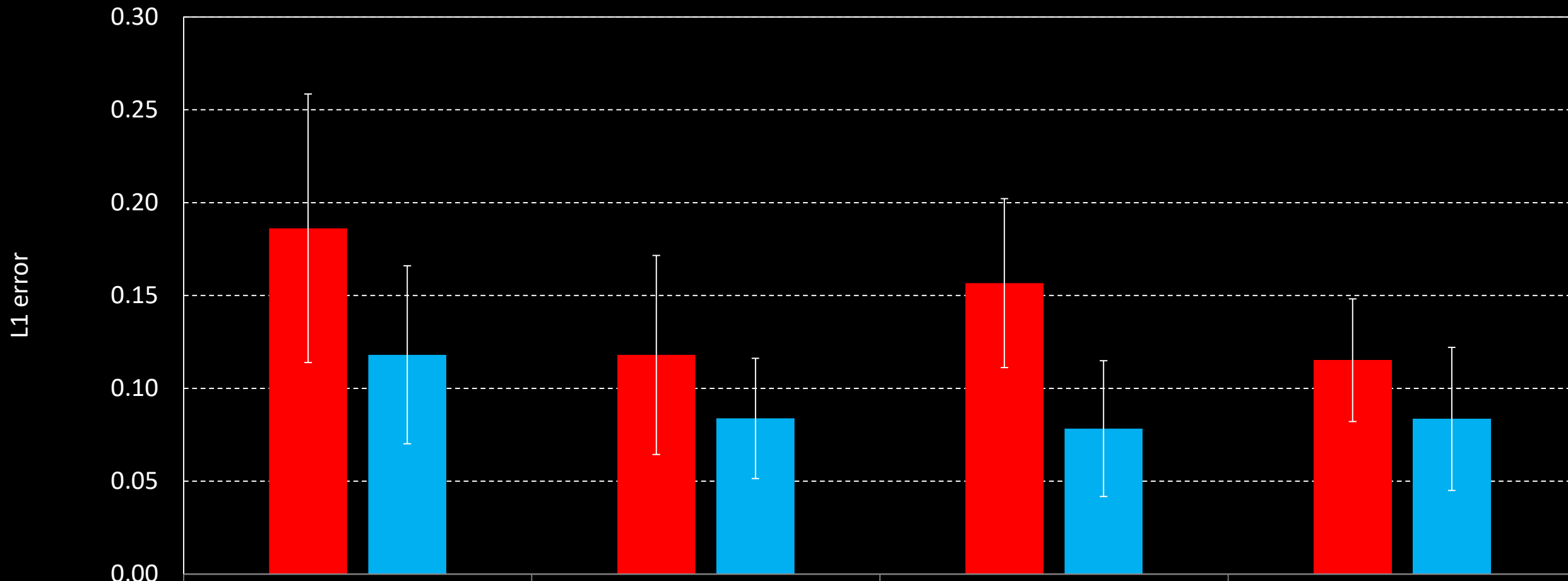




Quantitative Comparison

Single Image Dehazing

L1 error plot



	He [2009]	Fattal [2014]	Berman [2016]	ours
dehazed	0.1862	0.1180	0.1567	0.1152
transmission	0.1181	0.0839	0.0783	0.0836

dehazed transmission

hazy input

ground truth

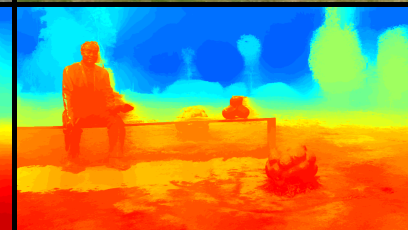
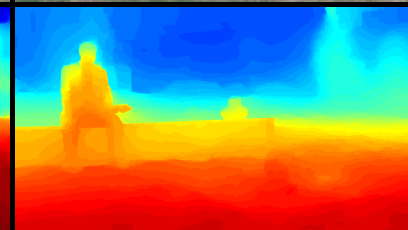
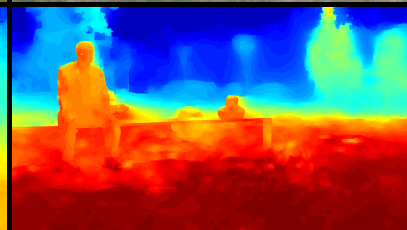
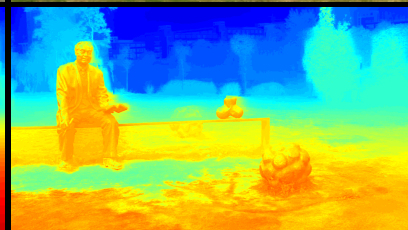
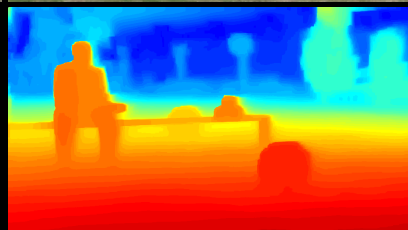
He et al.

Fattal14

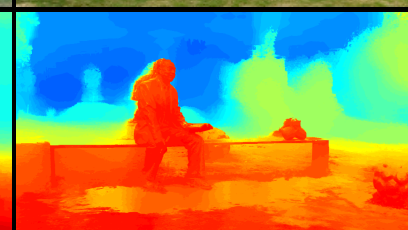
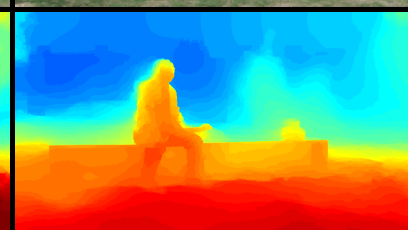
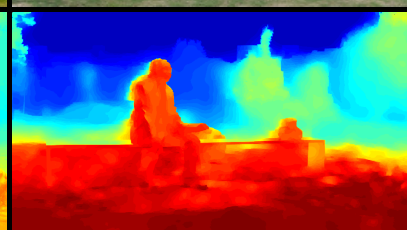
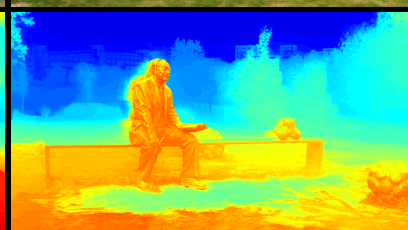
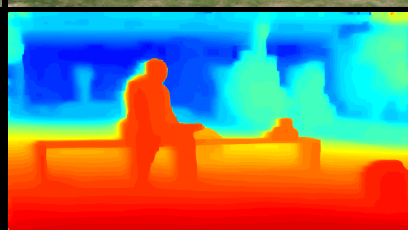
Berman et al.

ours

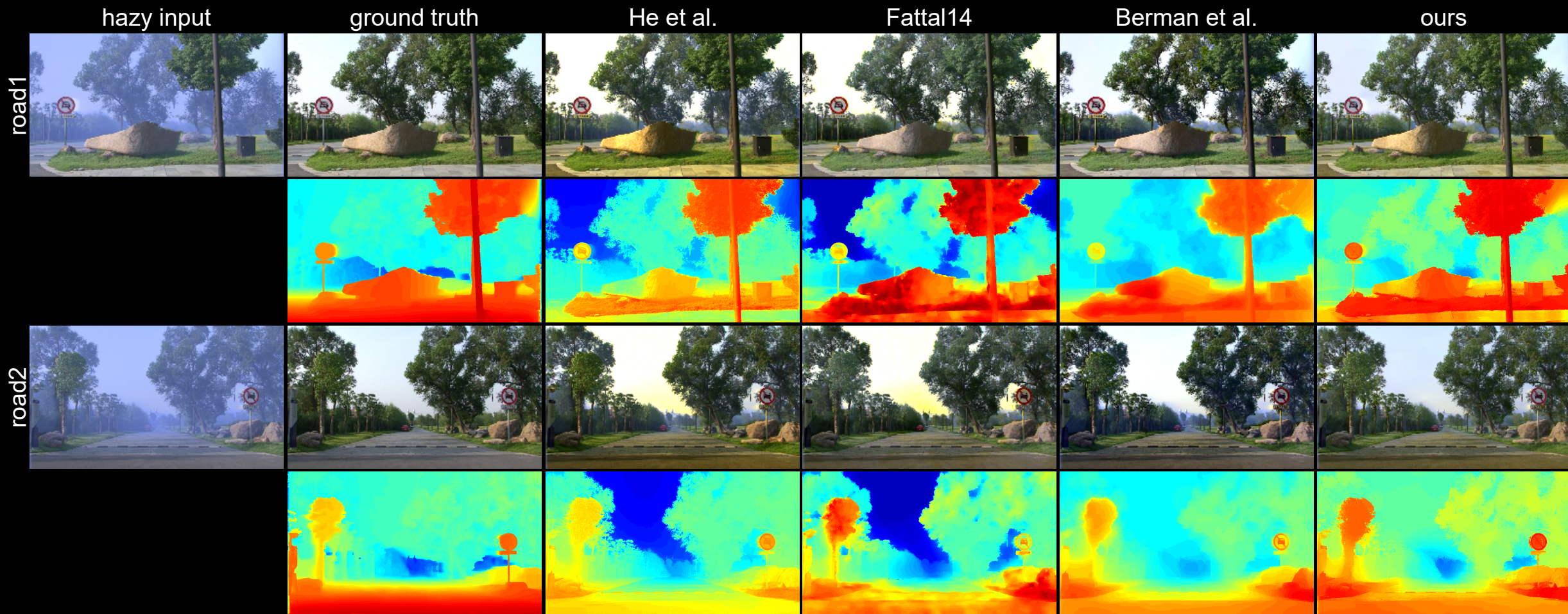
lawn1



lawn2







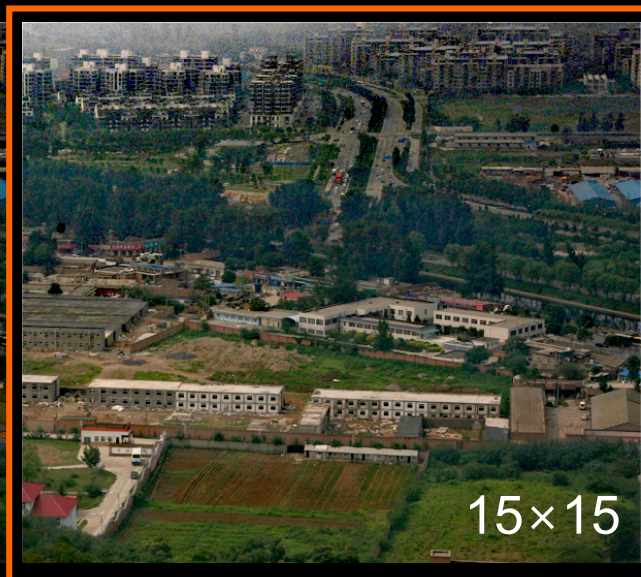
L1 error

	He et al.	Fattal14	Berman et al.	ours
church	0.0711/0.1765	0.1144/0.1726	0.1152/0.2100	0.1901/0.1854
couch	0.0631/0.1146	0.0895/0.1596	0.0512/0.1249	0.0942/0.1463
flower1	0.1639/0.2334	0.0472/0.0562	0.0607/0.1309	0.0626/0.0967
flower2	0.1808/0.2387	0.0418/0.0452	0.1154/0.1413	0.0570/0.0839
lawn1	0.1003/0.1636	0.0803/0.1189	0.0340/0.1289	0.0604/0.1052
lawn2	0.1111/0.1715	0.0851/0.1168	0.0431/0.1378	0.0618/0.1054
mansion	0.0616/0.1005	0.0457/0.0719	0.0825/0.1234	0.0614/0.0693
moebius	0.2079/0.3636	0.1460/0.2270	0.1525/0.2005	0.0823/0.1138
reindeer	0.1152/0.1821	0.0662/0.1005	0.0887/0.2549	0.1038/0.1459
road1	0.1127/0.1422	0.1028/0.0980	0.0582/0.1107	0.0676/0.0945
road2	0.1110/0.1615	0.1034/0.1317	0.0602/0.1602	0.0781/0.1206
average	0.1181/0.1862	0.0839/0.1180	0.0783/0.1567	0.0836/0.1152

(l1 error of estimated transmission/l1 error of estimated dehazed image)

Internal Comparison

Various Patch Sizes

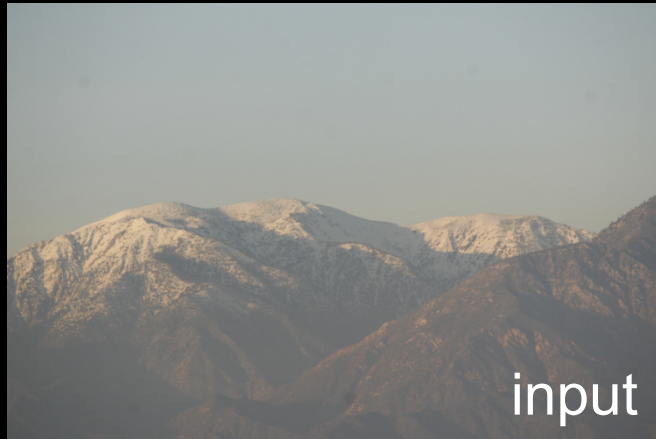


Our choice

Figure 13 in the paper

Internal Comparison

Impact of Outlier Rejection



input



without rejection



with rejection



input

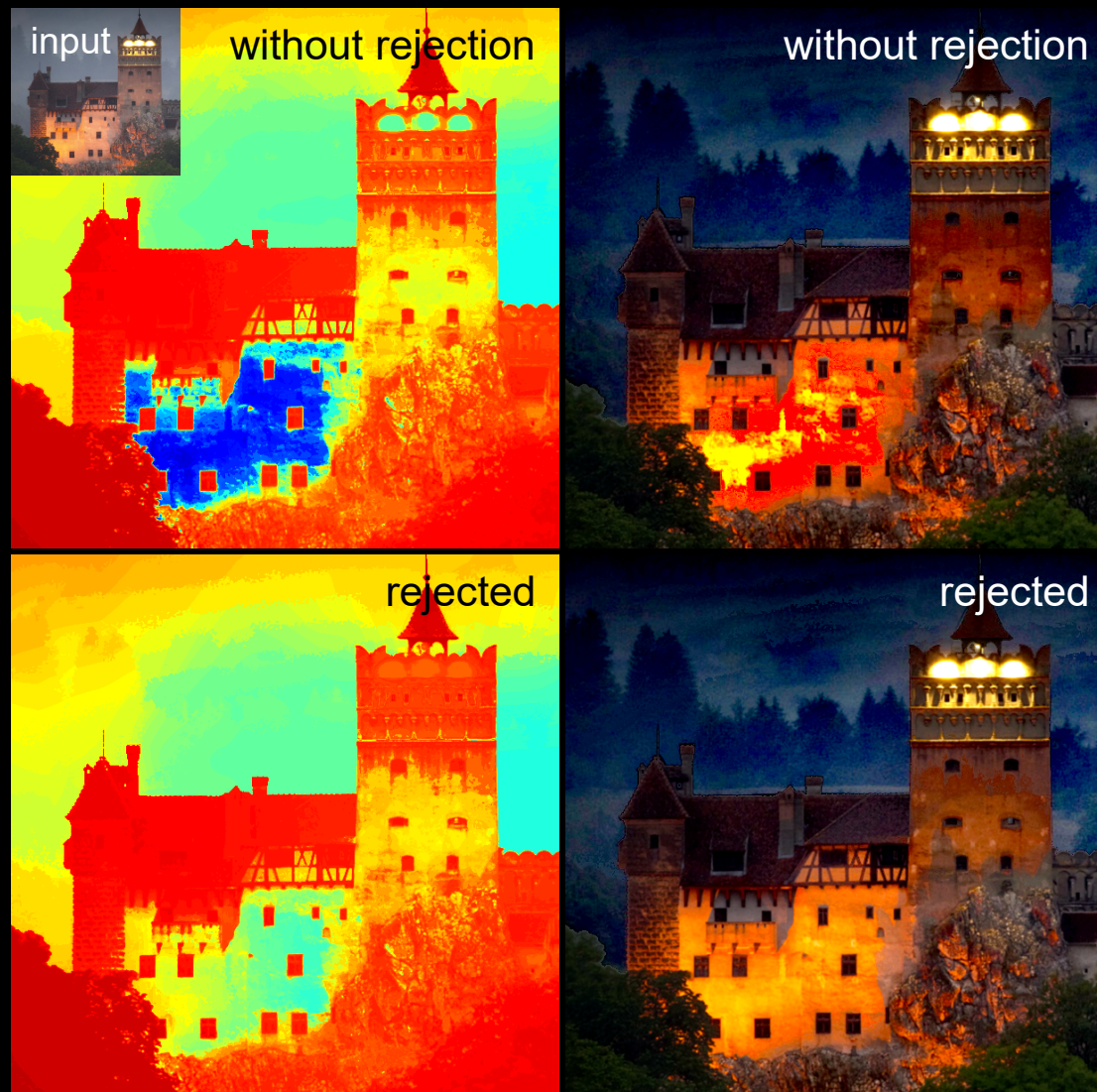


without rejection



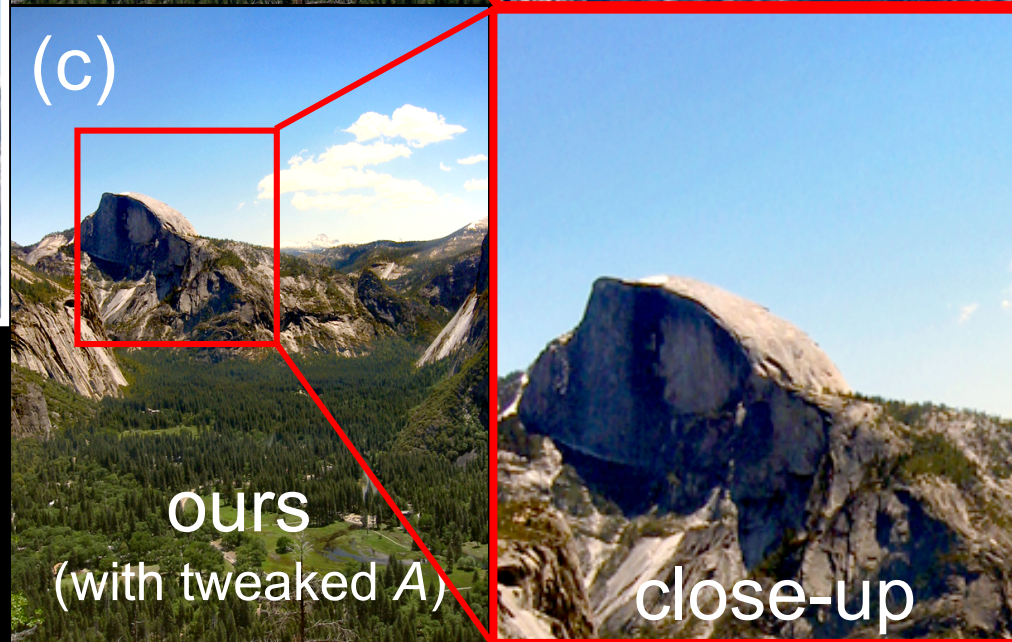
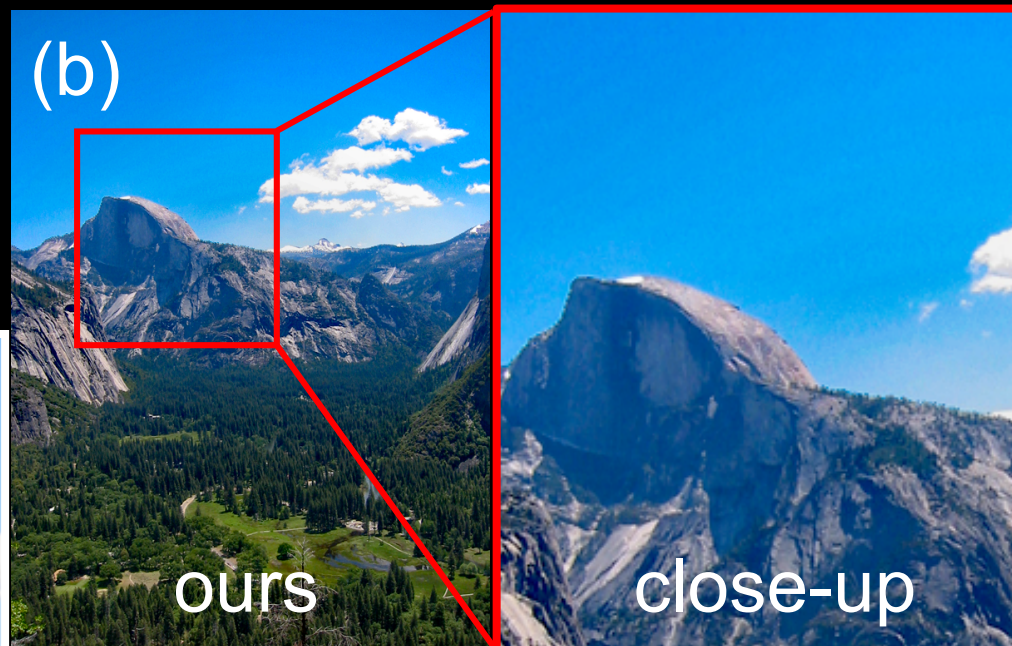
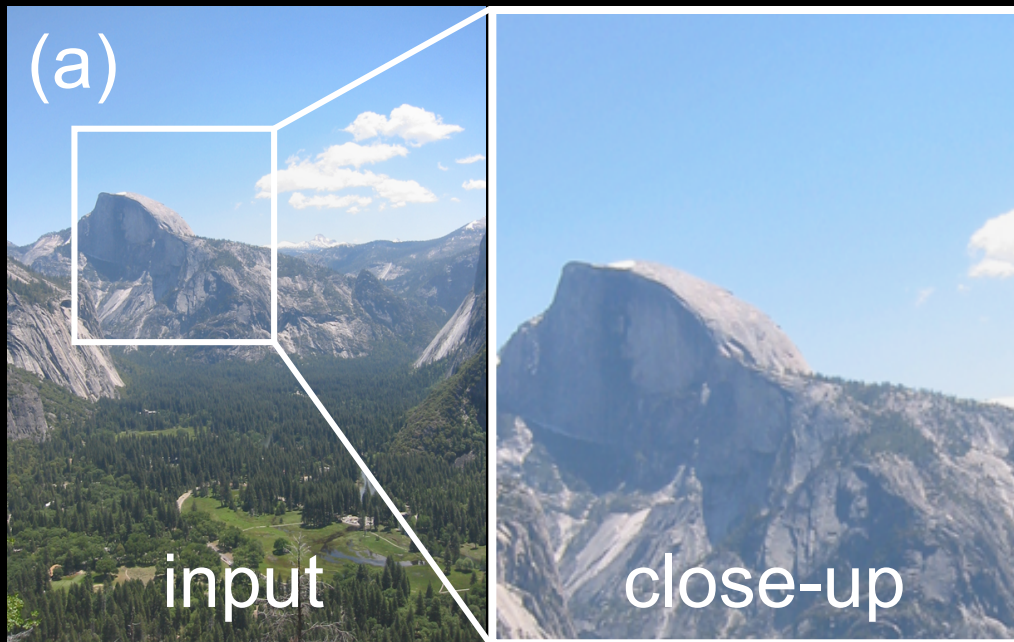
with rejection

Narrow angle outlier rejection



Saturated outlier rejection

Limitations



Non-Local Haze Propagation with an Iso-Depth Prior

Supplemental Material

Incheol Kim

Min H. Kim

Korea Advanced Institute of Science and Technology (KAIST)